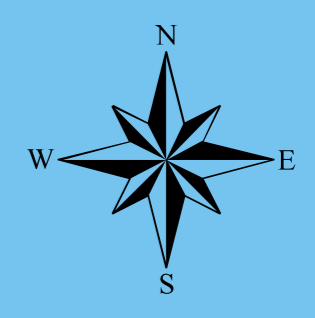
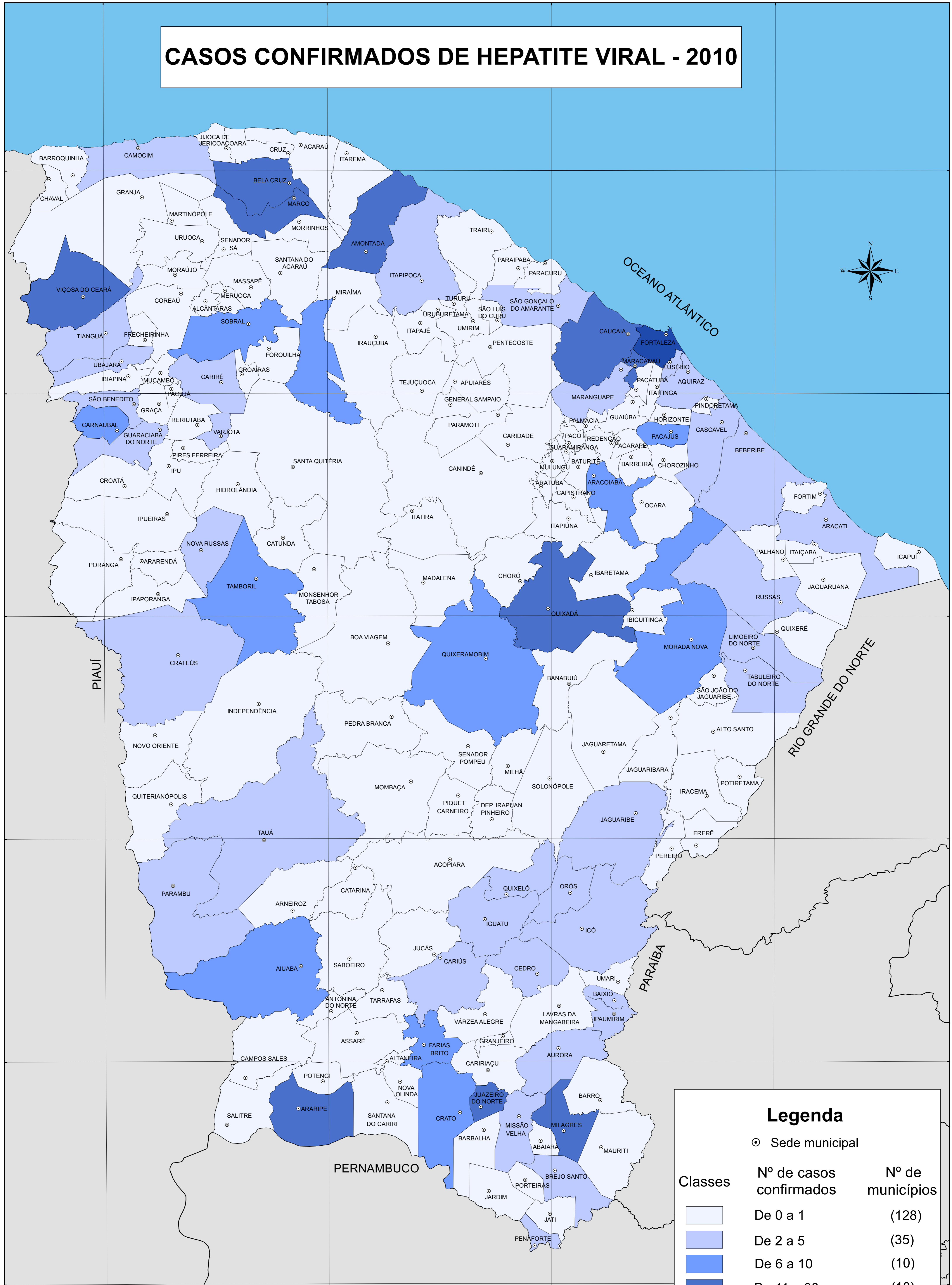


# CASOS CONFIRMADOS DE HEPATITE VIRAL - 2010



**Legenda**

○ Sede municipal

| Classes | Nº de casos confirmados | Nº de municípios |
|---------|-------------------------|------------------|
|         | De 0 a 1                | (128)            |
|         | De 2 a 5                | (35)             |
|         | De 6 a 10               | (10)             |
|         | De 11 a 30              | (10)             |
|         | De 31 a 243             | (01)             |